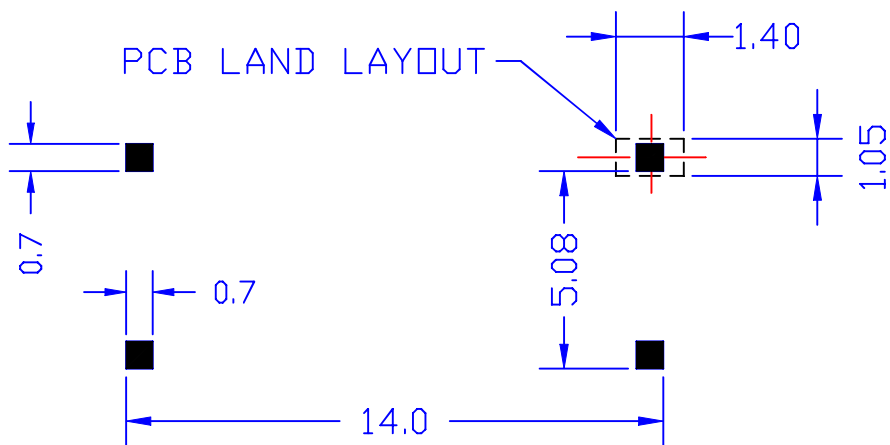


ELECTRICAL CHARACTERISTICS: (TRUE V.34 FOR SMT)

1. D.C.R. PIN 1-3 = 150 OHM +/-10% PIN 4-6 = 150 OHM +/-10%
2. INDUCTANCE (@250HZ, 0.5Vrms, PARALLEL) 1-3 = 4.0H MIN.
3. IMPEDANCE (@ 1KHZ, 0dBm, 6-4 W/H 301 OHM)
 - 1-3 = 600 OHM +/-2%
4. INSERTION LOSS = 3.3 +/-0.25dB
 - (@ 1KHZ, 0dBm, W/H 301 OHM LOAD)
5. FREQ. RESP. (@300HZ TO 4KHZ, REF. 1KHZ) = +/-0.1dB
6. RETURN LOSS @300HZ = 30dB MIN. @1KHZ = 35dB MIN.
 - @4KHZ, = 35dB MIN.
- 7 TURN RATIO = 1:1 +/-1%
8. POLARITY = PIN 1-6 INPHASE
9. LONGITUDINAL BAL. = 70dB MIN. (@ 200HZ TO 4KHZ)
10. T.H.D (@600HZ, -10dBm) = -82dB MAX.
11. HI-POT = 1250 VAC, 1mA, 2SEC. (PRI.-SEC.)
12. LEAD FREE.



UNLESS OTHERWISE SPECIFIED ALL TOLERANCES ARE ±0.25

						Atech [®]	TITLE 600: 301 TRANSFORMER	
							Atech Technology Co.. Ltd.	
						TEL:(02)2794-8667 FAX:(02)2794-8004		DWG. NO. ATS-182CN
RELEASE						UNITS:	SAFETY	
NO.	DESCRIPTION	DATE	BY	CHK	APPD	DATE	SHEET 1 OF 1	
REVISIONS						DRAW		